

国台学术报告 NAOC COLLOQUIUM

2013 年 第 42 次 / Number 42, 2013

TIME: Thursday, 2:30 PM, June 27, 2013 **LOCATION: A601 NAOC**

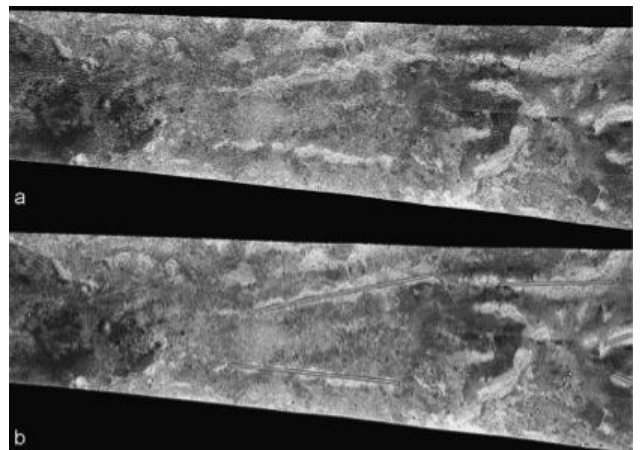
Mysteries of Titan

Dr. Donna M. Jurdy (Northwestern University)



Dr. Jurdy is a Professor at Northwestern University. She obtained her BS from State University of New York at Buffalo in 1970, and PhD from University of Michigan in 1974. Her work on polar wandering as deduced from paleomagnetism, as well as her work on plate motions and stress fields in the lithosphere help to

shape the story of geodynamics some 30 years later. Her recent research concentrates on terrestrial plate kinematics and dynamics, the tectonics of Venus, magnetization of Mars, and Titan's surface. Also, we've worked on Ganymede and the volcanism of Io.



All are welcome! Tea, coffee, biscuits will be served at 2:15 P.M.

You are welcome to nominate speakers to Weimin Yuan (wmy@nao.cas.cn), Mei Zhang (zhangmei@bao.ac.cn), Licai Deng (licai@bao.ac.cn), Xuelei Chen (xuelei@cosmology.bao.ac.cn), Shude Mao (smao@nao.cas.cn)